



St. Gregory's Catholic Primary School

'Together, in Jesus, we Love, Learn, Create and Celebrate!'

Headteacher: Mr Joseph Perree
Sandy Lane, Lydiate. L31 2LB
Telephone: (0151) 526 5856

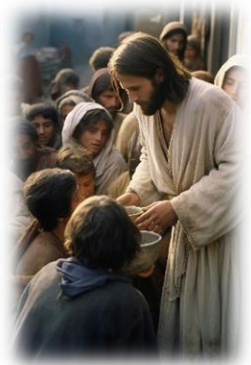
Email: admin.stgregorys@schools.sefton.gov.uk

Website: www.stgregorysprimary.co.uk

Friday 28th November, 2025

Dear St. Gregory's Community,

In Monday's Celebration of the Word, we explored the question: "Who do we look to in times of trouble?" Inspired by Luke 21:5-19, the children reflected on how we are called to look to God and to the responsible adults in our lives for support and guidance. Together, we considered the many ways our school community is safeguarded and cared for each day – from ongoing staff training and daily safeguarding measures, to the wide range of learning and enrichment opportunities that help our children understand how to keep safe, care for themselves and look out for others. This weekend, we begin our Advent journey, turning our hearts towards the coming of Jesus and preparing in hope, love and faith.



Advent & Festive Celebrations



As we enter this special season, we are delighted to share a variety of events that will help us celebrate Advent and Christmas together. Over the coming weeks, we look forward to welcoming families into school for our Choir Carol Concert, the Early Years and Key Stage 1 Nativity performances, our after-school Bingo event, and our Curriculum Showcase. This time of year is filled with joy, reflection and togetherness, and we truly value the partnership of our families in making these moments so meaningful. Please see later in the newsletter for more information, and please check the calendar of dates at the end of the newsletter.

Attendance - Thank You!

Thank you once again for your outstanding support with attendance. Since returning in September, our data has shown clear improvement from already strong starting points, reflecting just how much families are prioritising school attendance. Ensuring children attend school all day, every day, is essential in giving them access to a full, broad and rich education. It also helps them build their personal, social and emotional development, strengthen their friendships and grow in confidence. We are grateful for your ongoing commitment and the positive habits you continue to reinforce at home.



Staying Connected - @stgregs_primary

Are you following our Instagram account, @stgregs_primary? Are you keeping up to date with what's happening in school? Our children experience such an exciting curriculum each day, and we want you to share in the journey. Please follow us on social media to celebrate the successes with us. If you aren't on social media, you can still stay updated by scrolling down our school homepage – www.stgregorysprimary.co.uk – to the 'Latest Updates' section.



With my sincere thanks,

Mr Joseph Perree
Headteacher

ST. GREGORY'S



'Together,
in Jesus,
we Love,
Learn,
Create and
Celebrate!'

Newsletter

28th November, 2025.

St. Gregory's Catholic Primary School Presents...

BINGO NIGHT!

THURSDAY, 4th DECEMBER
STARTING at 6:00 PM
St. Gregory's Catholic Primary School

Huge thanks to all our families who have purchased tickets for our Christmas Bingo event on Thursday 4th December:

1 Eyes down will be 6pm 13

Please remember to bring along your tickets for this event 17

Refreshments and a deli bar will be on offer to purchase too!



Nativity Tickets

Tickets are now on sale via the school app for our wonderful EYFS and KSI Nativity performances.

Families can purchase up to 2 tickets per performance, dates/times as below:

9th December 9.15am - EYFS families
2.00pm KSI families

10th December 9.15am - EYFS families
2.00pm KSI families

Tickets are £2 each and are payable via your Parentpay account

For productions in school, we have very strict health and safety guidelines that we have to adhere to. Therefore, we must state that if you are bringing a toddler along with you, they need a ticket for this event. The allocation of tickets are based on numbers of people attending and not seats being used. We would also add, there will not be any standing room around the hall area and no space for prams or buggies. This is part of our fire and health & safety risk assessment.



Reserve Nativity Dates

As mentioned in last week's Newsletter, in the event of any major events taking place in school, we always keep dates in reserve, should exceptional circumstances mean an unavoidable change is needed. We do hope to go ahead with the dates already booked above, however our reserve dates would be 17th/18th December.

Year 6

Parents' SATs Meeting
Wednesday
3rd December 6pm

We will be holding a SATs Information Meeting for parents on *Wednesday 3rd December at 6pm.*

This session will explain how the SATs assessments work, what the children will be expected to do, and how you can support your child at home. It's also a great opportunity to ask questions and understand how we are preparing the children in school. We encourage all parents to attend this very informative meeting.



Christmas Dinner



All children at St. Gregory's are welcome to receive a traditional Christmas roast dinner on **Thursday 11th December**. Roast turkey and all the trimmings.....what a Christmas feast!



Tuesday
16th
December

St. Gregory's
Nursery

12.30pm
To
2.45pm



All our Nursery children are welcome to come along and join in the Christmas fun! Disco and magic with Turbo Tommy!



Another new learning area this way comes!



We're delighted to share that another new learning area is very quickly taking shape in school.

What was once an overcrowded yet underused cupboard is now being transformed into a fresh, inviting sensory space.

This will soon become a calming, supportive environment for children who need time to regulate, reflect or reset.

Something exciting is coming – watch this space!



We are proud to share a snapshot of our beautiful whole-school library and calm classroom space, thoughtfully created by our fantastic school council. The well-stocked, diverse library and its soft seating, gentle lighting and nature-themed décor provide a warm, peaceful environment. This space supports breakout groups, intervention work, quiet reading, and offers a calm place with an adult during break and lunchtime when needed.



We are so proud of this thoughtful, nurturing space created by our children, for our children.



**RECEPTION PLACES
CURRENTLY AVAILABLE**

Do you know a child currently in Reception who would like a place at St. Gregory's?

**APPLY FOR
RECEPTION CLASS
2026**

Do you know somebody who is looking for a Reception place from September 2026?

ST. GREGORY'S CATHOLIC PRIMARY SCHOOL

TOGETHER, IN JESUS, WE LOVE, LEARN, CREATE AND CELEBRATE!



EVERY DAY IS OPEN DAY

Come along for a guided tour from our headteacher, and see what makes St. Gregory's such a special place to learn and grow.

All visits welcome.
Visits during the school day warmly encouraged.

Tel: 0151-526-5856
email: admin.stgregorys@schools.sefton.gov.uk
www.stgregorysprimary.co.uk
Instagram: @stgregs_primary

APPLY FOR A SCHOOL PLACE

Is your child born on or between
01/09/2021 and 31/08/2022?

If so, your child is due to start
school September 2026!



**You MUST apply for a school place
online before 15 January 2026**

For more information or to make an
application, scan our QR code or go to
www.sefton.gov.uk/startingschool



sefton.gov.uk 0151 934 3590
admissions@sefton.gov.uk

Sefton Council 

Supporting families with children who have (or may have) SEND and/or neurodevelopmental needs.

What's on in Sefton Autumn 1 2025

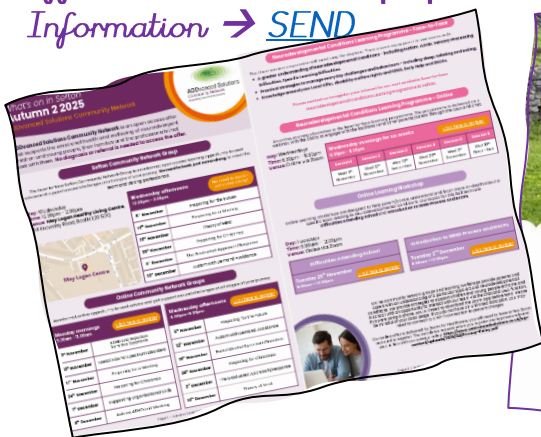
ADDvanced Solutions Community Network



ADDvanced Solutions Community Network is an open access offer that supports the emotional health and wellbeing of neurodivergent children and young people, their families and the professionals that work with them. **No diagnosis or referral is needed to access the offer.**

ADDvanced Solutions Community Network has released their programme of support - this is available to all families and the wider community! Please visit our SEND webpage or drop into the school office to collect a paper copy.

www.stgregorysprimary.co.uk → Key Information → SEND



The support offer is high quality and incredibly broad, covering a range of topics in a variety of ways:

- Sefton Community Network Groups (at the May Logan Healthy Living Centre, Bootle) on Wednesday afternoons, 12.30pm-2.30pm
- Online Community Network Groups, on Monday mornings (9.30am-11am) and Wednesday afternoons/early evenings (5pm - 6.30pm)
- Neurodevelopmental Conditions Learning Programme: Face-to-Face
- Neurodevelopmental Conditions Learning Programme: Online (Wednesday evenings, 6.30pm - 8.30pm)
- Online Learning Workshops (various dates)
- Autism Learning Programme for various ages on various dates
- Neurodevelopmental Conditions Awareness Raising Training for

St. Gregory's Catholic
Primary School Presents...

BINGO NIGHT!

THURSDAY, 4th DECEMBER
STARTING at 6:00 PM

St. Gregory's Catholic Primary School

£2.00 per adult
£1.00 per child

Bingo tickets and refreshments
on sale during the event!

Come along for an
evening full of fun,
prizes, and community
spirit - everyone
welcome!





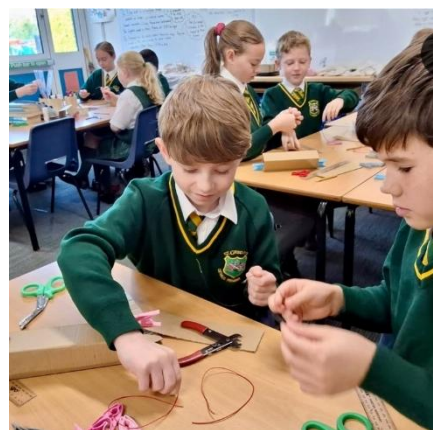
Year 3 had a fantastic time in Design and Technology this week as they designed and made their own biscuits. The children explored different flavour combinations and followed the instructions perfectly.



They were very proud of their finished biscuits—and even more excited to taste them! It was a wonderful opportunity for them to apply their creativity and learn through hands-on experience.



Year 5 enjoyed an inspiring DT Day with visiting DT Specialist Steph O'Donnell, where they explored how everyday products are engineered and then designed their very own torches. The children investigated different components, experimented with simple circuits, and created detailed design plans before building their prototypes. Steph guided them through each stage, encouraging creative thinking and problem-solving. The pupils were incredibly proud of their finished torches and loved seeing their ideas come to life. It was a brilliant hands-on learning experience that sparked plenty of excitement and curiosity!



CELEBRATE!

See how our
children
Thrive & Shine!



Well done to all
our award winners!





St. Gregory's Catholic Primary School



Together, in Jesus, we Love, Learn, Create and Celebrate!

Autumn Term 2025/2026

Autumn 1

- Mon 1st Sep: INSET Day (Staff only)
- Tues 2nd Sep: Autumn 1 Begins
- Mon 8th Sep: Y5 Swimming Begins
- Thu 11th Sep: Photographer (Individuals)
- Wed 17th Sep: Stay & Pray Class Worship (9am)
- Wed 1st Oct: Reception Reading Meeting (6pm-7pm, for Reception Class families)
- Fri 3rd Oct: Welcome Assembly (Reception Class & New Families)
- Tues 7th Oct-Wed 8th Oct: Parents' Eves
- Mon 6th-Fri 10th Oct: Book Fair
- Thu 23rd Oct: Y1 Croxteth Farm
- Fri 24th Oct: School Closes for Half Term Holiday (usual time)

Autumn 2

- Mon 3rd Oct: INSET Day (Staff only)
- Tues 4th Oct: Autumn 2 Begins
- Fri 7th Nov: Mufti Day (1 of 2)
Early Years/KS1 - chocolates/tinned sweets
KS2- fancy goods/gifts sets
- Thu 13th Nov: Y2 Chester Trip
- Mon 24th Nov: Y4 Swimming Begins
- Thu 27th Nov: Stay & Pray Class Worship (9am)
- Fri 28th Nov: Mufti Day
All classes – Bottle Donations
- Tues 2nd Dec: Y4 First Reconciliation (in school)
- Wed 3rd Dec: Y6 SATs Meeting (Y6 parents)
- Thu 4th Dec: Christmas Bingo
- Fri 5th Dec: Y5/6 Choir at Beechcroft Residential Home (during lunchtime)
- Tues 9th-Wed 10th Dec: EYFS/KS1 Christmas Performances (EYFS at 9.15am; KS1 at 2pm)
- Thu 11th Dec: Christmas Dinner Day!
Children may wear a Christmas Jumper/Festive Decoration with their uniform.
- Thu 11th Dec: Ecumenical Carol Service (6pm – 7pm, for Choir; all welcome)
- Fri 12th Dec: Curriculum Showcase (8.50am, all welcome)
- Mon 15th Dec: Choir Carol Concert, 4pm
- Tues 16th Dec: Whole-School Pantomime (Atkinson Theatre)
No Christmas jumpers- full school uniform, though children may wear a festive decoration if they wish.
- Tues 16th Dec: Nursery Christmas Party (afternoon)
- Fri 19th Dec: School Closes at 1.30pm for Christmas



St. Gregory's Catholic Primary School



Together, in Jesus, we Love, Learn, Create and Celebrate!

Spring Term 2025/2026

Spring 1

- Mon 5th Jan: Spring 1 Begins
- Tue 13th Jan: Y6 at Southport Eco Centre
- Thu 15th Jan: Y3 at Norton Priory
- Wed 21st Jan: Y4 at Chester Roman Experience
- Tue 27th Jan: Stay & Pray Class Worship (8.50am)
- Fri 6th Feb: Choir at Young Voices (Co-op Live Arena, Manchester)
- Mon 9th Feb: Y3 Swimming Begins
- Wed 11th Feb-Fri 13th Feb: Y3 Residential (CHET, Crosby)
- Fri 13th Feb: School Closes for Half-Term Holiday (usual time)

Spring 2

- Mon 23rd Feb: Spring 2 Begins
- Tues 24th Feb: Y2 Trip to Chester Zoo
- Wed 25th Feb-Tues 3rd Mar: Book Fair
- Wed 25th Feb-Thur 26th Feb: Parents' Eves
- Wed 25th-Tues 3rd Mar: Book Fair
- Thu 26th Feb: Y5 at Liverpool Old Docks Museum & Bus Tour
- Wed 4th Mar-Fri 6th Mar: Y5 Residential (York City Centre)
- Thur 5th Mar: World Book Day
- Wed 11th Mar: Science Fair (3.30pm in the school hall)
- Thu 12th Mar: Lenten Reconciliation Schools' Service at St. Gregory's Church
- Fri 13th Mar: Curriculum Showcase (8.50am, all welcome)
- Tue 17th Mar: Y1 at Storybarn, Calderstones Park
- Wed 18th Mar: Stay & Pray Class Worship (8.50am)
- Mon 23rd-Tue 26th Mar: Good Shepherd Fundraising Week (KS2 Enterprise; all children able to join the fun & donate)
- Fri 27th Mar: Talent Show in afternoon
- Fri 27th Mar: School Closes for Easter Holidays (usual time)



St. Gregory's Catholic Primary School



Together, in Jesus, we Love, Learn, Create and Celebrate!

Summer Term 2025/2026

Summer 1

- Mon 13th Apr: Summer 1 Begins
- Thu 30th Apr: Reception at Martin Mere
- Thu 7th May: Stay & Pray Class Worship (8.50am)
- Mon 11th May: Y6 Swimming Begins
- Mon 11th May-Thur 14th May: Y6 SATs
- Thur 21st May: Y3 at Catalyst Centre
- Thur 21st May: School Closes for Half-Term Holiday (usual time)
- Fri 22nd May: INSET Day (staff only)

Summer 2

- Mon 1st Jun: INSET Day (Staff only)
- Tues 2nd Jun: INSET Day (Staff only)
- Wed 3rd Jun: Summer 2 Begins
- Tues 9th Jun: Y6 at Western Approaches
- Wed 10th Jun-Fri 12th Jun: Y4 Residential (Malham, Yorkshire)
- Fri 12th Jun – Y5 at Quarrybank Mill (Victorian Service Costumes)
- Tue 16th Jun: Stay & Pray Class Worship (8.50am)
- Wed 24th Jun: Y1/2 Liverpool Philharmonic Trip (Return at approx. 3.30pm)
- Fri 26th June – Sports Day (KS1 9am; KS2 1pm)
- Wed 1st Jul-Fri 3rd Jul: Y6 Residential (Robinwood, Wrexham)
- Fri 10th Jul: Curriculum Showcase & Art Exhibition (8.50am)
- Fri 10th Jul: End-of-Year Reports shared
- Tue 14th Jul: KS2 Performance (1.30pm for Y3 & Y5 families)
- Wed 15th Jul: KS2 Performance (10.15am for Grandparents) (1.30pm for Y4 & Y6 families)
- Wed 15th Jul: Optional Parents' Eve
- Thu 16th Jul: Y6 Leavers' Mass, 10am, in school
- Thu 16th Jul: Summer Disco (EYFS/KS1: 4.30pm – 5.45pm) (KS2: 6pm – 7.15pm)
- Fri 17th Jul: School Closes at 1.30pm for Summer Holidays