



St. Gregory's Catholic Primary School

'Together, in Jesus, we Love, Learn, Create and Celebrate!'

Headteacher: Mr Joseph Perree

Sandy Lane, Lydiate. L31 2LB

Telephone: (0151) 526 5856

Email: admin.stgregorys@schools.sefton.gov.uk

Website: www.stgregorysprimary.co.uk

Friday 14th November, 2025

Dear St. Gregory's Community,

This week, we marked Remembrance Day in poignant, reverent services both in school and at Our Lady's, Lydiate. Year 5 represented St. Gregory's beautifully in the community, whilst Year 6 and our staff team led remembrance in school with dignity and respect. Through prayer, poetry, song and scripture, we remembered all who have paid the ultimate sacrifice, and indeed all who have gone before us. Year 6 led a stunning candle-lit Roll of Honour for the 24 fallen Lydiate soldiers of World War One – a particularly moving moment. As always, we look forward together, praying for peace and justice in our world.



Year 2 Visit to Chester!

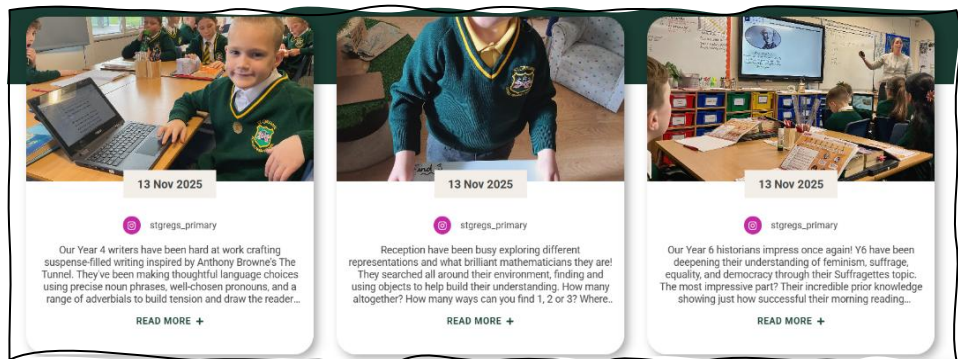
Year 2 had a brilliant day at Chester Grosvenor Museum, where they enhanced their curriculum with informative workshops, role-play and lots of hands-on, exploratory play. The museum staff were hugely impressed by the children's knowledge and vocabulary, and equally impressed by their enthusiasm and curiosity for the subject! Check out our reel on Instagram to see their learning in action!

Teaching, Learning & Computing

We continue to use high-quality specialist support to further enhance teaching, learning and the overall pupil experience across St. Gregory's, and I couldn't be prouder of our journey or the fantastic outcomes. In Computing, our partner work over the last 12 months has significantly enriched opportunities for children, both in discrete computing lessons and through technology-enhanced learning across the curriculum. From subtle, individualised adaptations to exciting and creative ways of presenting learning, technology is helping pupils access, engage and excel. With our Creating Media focus this term, Year 5 have become podcast creators, designing vector graphics and diving into audio production. See our Instagram for a snapshot of their learning and creativity. Fantastic work from all involved!

Staying Connected - [@stgregs_primary](https://www.instagram.com/stgregs_primary)

Are you following our Instagram account, [@stgregs_primary](https://www.instagram.com/stgregs_primary)? Are you keeping up to date with what's happening in school? Our children experience such an exciting curriculum each day, and we want you to share in the journey. Please follow us on social media to celebrate the successes with us. If you aren't on social media, you can still stay updated by scrolling down our school homepage – www.stgregorysprimary.co.uk – to the 'Latest Updates' section.



Attendance - Thank You!

Thank you for your continued commitment to attendance. Across the first Autumn half-term, we saw **significant week-on-week improvements compared to last year**: we are grateful for the efforts of all our families in **making every moment matter**. Thank you! As the mornings and evenings grow darker and temperatures drop, those extra minutes in bed or cosy days at home can be tempting. Please help us maintain this positive momentum by continuing to reinforce the strong behaviours and attitudes to attendance shown throughout the first half-term – they are making a clear difference.

Punctuality

Attending every day is vital, and **attending on time is equally important**. Minutes missed quickly add up, and when children are regularly late, they regularly miss vital learning. Our gates open at 8.30am for a 10-minute Window of Welcome **before the school day officially begins at 8.40am**. By this time, all children are in class and already engaging with learning. Arriving late means children must enter a busy classroom and immediately begin the challenge of catching up. If there are barriers preventing good punctuality, please speak with us so we can work together. We mustn't lower expectations for any child, and we can work side by side to find solutions. **Please make every effort to arrive before 8.40am every day** so children feel included and have a strong sense of belonging from the very moment they arrive.



Parent Survey

It's hard to believe that a year has passed since our new leadership journey began at St. Gregory's! As we did last Autumn, we are asking families to complete our St. Gregory's Parent View Feedback form, which is available on the school app. This year, the survey includes just 14 multiple-choice questions (not all will apply to every family), with an optional written response at the end. We are excited to hear your thoughts, capturing your experiences over the past 12 months so that, together, we continue building a school where every child knows they belong, can achieve, and can thrive both at and beyond St. Gregory's.

With my sincere thanks.

Mr Joseph Perree
Headteacher

Our Beautiful New Library Space & Calm Classroom



We are proud to share a snapshot of our beautiful whole-school library and calm classroom space, lovingly designed and created by our fantastic school council. The well-stocked (and continually growing!) library is filled with high-quality, diverse literature, and the soft seating, low lamplight, bunting and nature-themed décor create a warm, peaceful reading environment. This space is used for breakout groups, intervention support, quiet reading, and also offers a calming place with an adult during break and lunchtime when needed.



We are so proud of this thoughtful, nurturing space —
created by our children, for our children.

RECEPTION PLACES

CURRENTLY AVAILABLE

Do you know a child currently in Reception who would like a place at St. Gregory's?

APPLY FOR

RECEPTION CLASS

2026

Do you know somebody who is looking for a Reception place from September 2026?

ST. GREGORY'S CATHOLIC PRIMARY SCHOOL

TOGETHER, IN JESUS, WE LOVE, LEARN, CREATE AND CELEBRATE!



EVERY DAY IS OPEN DAY

Come along for a guided tour from our headteacher, and see what makes St. Gregory's such a special place to learn and grow.

All visits welcome.

Visits during the school day warmly encouraged.

Tel: 0151-526-5856

email: admin.stgregorys@schools.sefton.gov.uk

www.stgregorysprimary.co.uk

Instagram: @stgregs_primary

APPLY FOR A SCHOOL PLACE

Is your child born on or between
01/09/2021 and 31/08/2022?

If so, your child is due to start
school September 2026!



**You MUST apply for a school place
online before 15 January 2026**

For more information or to make an
application, scan our QR code or go to
www.sefton.gov.uk/startingschool



sefton.gov.uk 0151 934 3590
admissions@sefton.gov.uk

Sefton Council 

Supporting families with children who have (or may have) SEND and/or neurodevelopmental needs.

What's on in Sefton Autumn 1 2025

ADDvanced Solutions Community Network

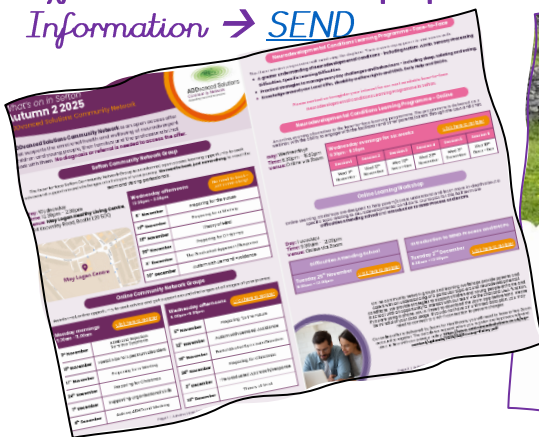


ADDvanced Solutions Community Network is an open access offer that supports the emotional health and wellbeing of neurodivergent children and young people, their families and the professionals that work with them. **No diagnosis or referral is needed to access the offer.**

ADDvanced Solutions Community Network has released their programme of support - this is available to all families and the wider community! Please visit our SEND webpage or drop into the school office to collect a paper copy.

Information → [SEND](#)

www.stgregorysprimary.co.uk → Key Information



The support offer is high quality and incredibly broad, covering a range of topics in a variety of ways:

- Sefton Community Network Groups (at the May Logan Healthy Living Centre, Bootle) on Wednesday afternoons, 12.30pm-2.30pm
- Online Community Network Groups, on Monday mornings (9.30am-11am) and Wednesday afternoons/early evenings (5pm - 6.30pm)
- Neurodevelopmental Conditions Learning Programme: Face-to-Face
- Neurodevelopmental Conditions Learning Programme: Online (Wednesday evenings, 6.30pm - 8.30pm)
- Online Learning Workshops (various dates)
- Autism Learning Programme for various ages on various dates
- Neurodevelopmental Conditions Awareness Raising Training for

St. Gregory's Catholic
Primary School Presents...

BINGO NIGHT!

THURSDAY, 4th DECEMBER
STARTING at 6:00 PM

St. Gregory's Catholic Primary School

£2.00 per adult
£1.00 per child

Bingo tickets and refreshments
on sale during the event!

Come along for an
evening full of fun,
prizes, and community
spirit - everyone
welcome!



CELEBRATE!

See how our
children
Thrive & Shine!



Well done to all
our award
winners!





St. Gregory's Catholic Primary School



Together, in Jesus, we Love, Learn, Create and Celebrate!

Autumn Term 2025/2026

Autumn 1

- Mon 1st Sep: INSET Day (Staff only)
- Tues 2nd Sep: Autumn 1 Begins
- Mon 8th Sep: Y5 Swimming Begins
- Thu 11th Sep: Photographer (Individuals)
- Wed 17th Sep: Stay & Pray Class Worship (9am)
- Wed 1st Oct: Reception Reading Meeting (6pm-7pm, for Reception Class families)
- Fri 3rd Oct: Welcome Assembly (Reception Class & New Families)
- Tues 7th Oct-Wed 8th Oct: Parents' Eves
- Mon 6th-Fri 10th Oct: Book Fair
- Thu 23rd Oct: Y1 Croxteth Farm
- Fri 24th Oct: School Closes for Half Term Holiday (usual time)

Autumn 2

- Mon 3rd Oct: INSET Day (Staff only)
- Tues 4th Oct: Autumn 2 Begins
- Fri 7th Nov: Mufti Day (1 of 2)
Early Years/KS1 - chocolates/tinned sweets
KS2- fancy goods/gifts sets
- Thu 13th Nov: Y2 Chester Trip
- Mon 24th Nov: Y4 Swimming Begins
- Thu 27th Nov: Stay & Pray Class Worship (9am)
- Fri 28th Nov: Mufti Day
All classes – Bottle Donations
- Tues 2nd Dec: Y4 First Reconciliation (in school)
- Wed 3rd Dec: Y6 SATs Meeting (Y6 parents)
- Thu 4th Dec: Christmas Bingo
- Fri 5th Dec: Y5/6 Choir at Beechcroft Residential Home (during lunchtime)
- Tues 9th-Wed 10th Dec: EYFS/KS1 Christmas Performances (EYFS at 9.15am; KS1 at 2pm)
- Thu 11th Dec: Christmas Dinner Day!
Children may wear a Christmas Jumper/Festive Decoration with their uniform.
- Thu 11th Dec: Ecumenical Carol Service (6pm – 7pm, for Choir; all welcome)
- Fri 12th Dec: Curriculum Showcase (8.50am, all welcome)
- Mon 15th Dec: Choir Carol Concert, 4pm
- Tues 16th Dec: Whole-School Pantomime (Atkinson Theatre)
No Christmas jumpers- full school uniform, though children may wear a festive decoration if they wish.
- Tues 16th Dec: Nursery Christmas Party (afternoon)
- Fri 19th Dec: School Closes at 1.30pm for Christmas



St. Gregory's Catholic Primary School



Together, in Jesus, we Love, Learn, Create and Celebrate!

Spring Term 2025/2026

Spring 1

- Mon 5th Jan: Spring 1 Begins
- Tue 13th Jan: Y6 at Southport Eco Centre
- Thu 15th Jan: Y3 at Norton Priory
- Wed 21st Jan: Y4 at Chester Roman Experience
- Tue 27th Jan: Stay & Pray Class Worship (8.50am)
- Fri 6th Feb: Choir at Young Voices (Co-op Live Arena, Manchester)
- Mon 9th Feb: Y3 Swimming Begins
- Wed 11th Feb-Fri 13th Feb: Y3 Residential (CHET, Crosby)
- Fri 13th Feb: School Closes for Half-Term Holiday (usual time)

Spring 2

- Mon 23rd Feb: Spring 2 Begins
- Tues 24th Feb: Y2 Trip to Chester Zoo
- Wed 25th Feb-Tues 3rd Mar: Book Fair
- Wed 25th Feb-Thur 26th Feb: Parents' Eves
- Wed 25th-Tues 3rd Mar: Book Fair
- Thu 26th Feb: Y5 at Liverpool Old Docks Museum & Bus Tour
- Wed 4th Mar-Fri 6th Mar: Y5 Residential (York City Centre)
- Thur 5th Mar: World Book Day
- Wed 11th Mar: Science Fair (3.30pm in the school hall)
- Thu 12th Mar: Lenten Reconciliation Schools' Service at St. Gregory's Church
- Fri 13th Mar: Curriculum Showcase (8.50am, all welcome)
- Tue 17th Mar: Y1 at Storybarn, Calderstones Park
- Wed 18th Mar: Stay & Pray Class Worship (8.50am)
- Mon 23rd-Tue 26th Mar: Good Shepherd Fundraising Week (KS2 Enterprise; all children able to join the fun & donate)
- Fri 27th Mar: Talent Show in afternoon
- Fri 27th Mar: School Closes for Easter Holidays (usual time)



St. Gregory's Catholic Primary School



Together, in Jesus, we Love, Learn, Create and Celebrate!

Summer Term 2025/2026

Summer 1

- Mon 13th Apr: Summer 1 Begins
- Thu 30th Apr: Reception at Martin Mere
- Thu 7th May: Stay & Pray Class Worship (8.50am)
- Mon 11th May: Y6 Swimming Begins
- Mon 11th May-Thur 14th May: Y6 SATs
- Thur 21st May: Y3 at Catalyst Centre
- Thur 21st May: School Closes for Half-Term Holiday (usual time)
- Fri 22nd May: INSET Day (staff only)

Summer 2

- Mon 1st Jun: INSET Day (Staff only)
- Tues 2nd Jun: INSET Day (Staff only)
- Wed 3rd Jun: Summer 2 Begins
- Tues 9th Jun: Y6 at Western Approaches
- Wed 10th Jun-Fri 12th Jun: Y4 Residential (Malham, Yorkshire)
- Fri 12th Jun – Y5 at Quarrybank Mill (Victorian Service Costumes)
- Tue 16th Jun: Stay & Pray Class Worship (8.50am)
- Wed 24th Jun: Y1/2 Liverpool Philharmonic Trip (Return at approx. 3.30pm)
- Fri 26th June – Sports Day (KS1 9am; KS2 1pm)
- Wed 1st Jul-Fri 3rd Jul: Y6 Residential (Robinwood, Wrexham)
- Fri 10th Jul: Curriculum Showcase & Art Exhibition (8.50am)
- Fri 10th Jul: End-of-Year Reports shared
- Tue 14th Jul: KS2 Performance (1.30pm for Y3 & Y5 families)
- Wed 15th Jul: KS2 Performance (10.15am for Grandparents) (1.30pm for Y4 & Y6 families)
- Wed 15th Jul: Optional Parents' Eve
- Thu 16th Jul: Y6 Leavers' Mass, 10am, in school
- Thu 16th Jul: Summer Disco (EYFS/KS1: 4.30pm – 5.45pm) (KS2: 6pm – 7.15pm)
- Fri 17th Jul: School Closes at 1.30pm for Summer Holidays