



Weekly Newsletter

7th November, 2025



Weekly Attendance And Punctuality

Reception - 98.8%
 Year 1 - 91.5%
 Year 2 - 100%
 Year 3 - 94.4%
 Year 4 - 100%
 Year 5 - 96.3%
 Year 6 - 97.6%

Overall attendance for this week is 96.8%

Remember -
"We open the gate at half past 8!"

Lates this week:



Clubs for this half term, as below:

Monday - Choir (KS2) - £15.00
 Monday - Y2/Y3 Football - £ 30.00
 Tuesday - Dodgeball (KS2) - £30.00
 Wednesday - KS2 Football - £30.00
 Thursday - Reception/Y1 Multisports - £30.00
 Thursday - KS2 Big Band - £30.00

All clubs will begin week commencing Monday 10th November and will finish on week ending 12th December 2025. All clubs run from 3.20pm to 4.20pm. Please remember most clubs will be taking place outdoors, so waterproof lightweight jackets are advisable.

All clubs must be paid for by the end of the second week. If your child changes their mind after the club has commenced, you will still be charged for the club.

A form is available on the school app for parents to select Clubs for the children.

Dates for your Diary!

November

10th November
Year 5 Swimming Lessons continue

11th November
Year 6 Height & Weight programme with Merseycare

13th November
Year 2 visit to Chester Zoo

17th November
Year 5 Swimming Lesson

24th November
Year 4 commence swimming lessons

26th November
Cross Country at Maricourt High School

27th November
Stay and Pray Class Worship - families invited

28th November
MUFTI DAY (2)

WHEN I ARRIVE LATE TO SCHOOL



When a child arrives late to school, it can have several negative impacts on their wellbeing and learning. Arriving late often means missing important parts of the morning routine, such as registration, class announcements and preparation for first lesson of the day, which can make it harder for the child to settle and focus.

It can also cause feelings of embarrassment or anxiety when entering the classroom after everyone else has arrived on time. Over time, regular lateness can affect a child's confidence, learning progress, and sense of belonging in the school community. Consistent punctuality helps children start the day calmly, feel organised, and make the most of every learning opportunity.

We understand that sometimes life can be hectic of a morning and traffic issues along the way can also cause you to arrive late, however, we do ask that our families really try their best to arrive on time for school each day.

If you do arrive late to school, every child needs to be accompanied to the school office area and parents must sign the child in on the electronic machine in the foyer. Please do not drop off children at the late gate and leave them to walk into school unaccompanied. This is to ensure the safety of our children, as part of our safeguarding procedures.



MUFTI DAY



Thank you to our families who supported our first **Mufti Day** this week. All items donated will go towards our **Christmas Bingo** fundraising event, which will be held on **Thursday 4th December**.

We will be holding a further Mufti Day on 28th November 2025. We are asking, if families are able to, can you please donate the following:

Mufti Day 2 - 28th November 2025
All classes - Bottles

The festive treats will go towards making our Christmas Bingo a fun and memorable celebration for everyone, helping support a joyful school community event!

We will be sending information out to families about our Christmas Bingo event after half term - watch this space for your tickets!



St. Gregory's Catholic Primary School

'Together, in Jesus, we Love, Learn, Create and Celebrate!'

Headteacher: Mr Joseph Perree

Sandy Lane, Lydiate. L31 2LB

Telephone: (0151) 526 5856

Email: admin.stgregorys@schools.sefton.gov.uk

Website: www.stgregorysprimary.co.uk

Friday 7th November, 2025

Dear St. Gregory's Community,

Welcome back to school after what we hope was a restful and enjoyable half-term break. Together, we step into Autumn 2—arguably one of the most exciting and joy-filled half terms of the year—and prepare to journey together through Advent in preparation for Christmas. Next week, we will gather as a school to mark Remembrance Day, with a special service led by Year 6. Our Year 5 children will represent St. Gregory's at the Lydiate War Memorial (please complete the consent form on ParentApp), while the rest of our school family gathers for a time of reflection and prayer in school.

Looking Ahead

Before the half term, we shared our annual calendar (see the end of our newsletters), designed to give families plenty of notice to plan for and attend the many exciting events we have ahead. Following such positive feedback from last year (thank you for your helpful comments and suggestions!), we've continued to strengthen our parental engagement offer:



- **Regular Stay & Pray** sessions, now alternating days across the year to give more families the chance to attend.
- **Termly Curriculum Showcases**, now enhanced with additional subject exhibitions such as Science and Art.
- **Parent workshops and coffee mornings**, shaped by your valuable input (we're working in the background on a programme of workshops, considering your suggestions)
- **Sporting opportunities** for families to attend and cheer on our teams.
- Our much-loved **musical showcases**, which return each term after their wonderful success last year—a true celebration of talent and joy.
- **'Friends of St. Gregory's PTA Meeting - Friday, 14th November 3.30pm - 4.30pm** Come along to our first PTA meeting of this school year! Support preparation for our Bingo and in developing our 2025-2026 schedule of activities. All welcome!

Developing the Whole Child - Our 'Fullness of Life' Curriculum

At St. Gregory's, we take great pride in our broad and deep personal development offer, designed to nurture every child personally, socially, and emotionally. Over the last year, we reflected carefully on excellent existing practice and brought it together into a comprehensive, thoughtfully designed offer—our **Fullness of Life Curriculum**. This curriculum develops the whole child from the inside out, equipping them with the knowledge, skills, and confidence to thrive at St. Gregory's and beyond, with a deep sense of belonging and purpose. You can read more about our Fullness of Life approach later in this newsletter.



A St. Gregory's Staff Team to be Proud Of

It's not only our children who have been hard at work this week! Our incredible staff team continues to engage in a wide range of high-quality training opportunities, using up-to-date research and working closely with nationally regarded consultants and professionals who collaborate with the Department for

Education and outstanding schools across the country. We are blessed to have such a forward-thinking and reflective team, deeply committed to ensuring that teaching and learning at St. Gregory's remains of the highest standard. We were particularly proud that, this week, visiting consultants took away examples of St. Gregory's work as models of exceptional practice—especially the strong foundations we've built within our Early Years Foundation Stage. I'm immensely proud of our children and staff for their continued drive for excellence in all that they are and do. What a team!

Spreading the Word - Reception Places Available & Applying for Reception 2026!

*Do you know a family with a child currently in Reception who may be looking for a new school?
Perhaps you know someone searching for a Reception place for September 2026?*



At a time when birth rates are low, we're asking our community to come together to help us share the good news about St. Gregory's—the exceptional teaching, caring ethos, and the truly nurturing family atmosphere that makes our school so special. Please encourage interested families to arrange a visit and see first-hand what makes our St. Gregory's family truly one of a kind: our wonderful children, our dedicated staff, and our nurturing, faith-filled community and environment.

I look forward to another wonderful and fruitful (and dare I say, festive?) half term ahead!

With every good wish,

A handwritten signature in black ink, appearing to read 'J Perree'.

Mr Joseph Perree
Headteacher

St. Gregory's Catholic Primary School

Spotlight on

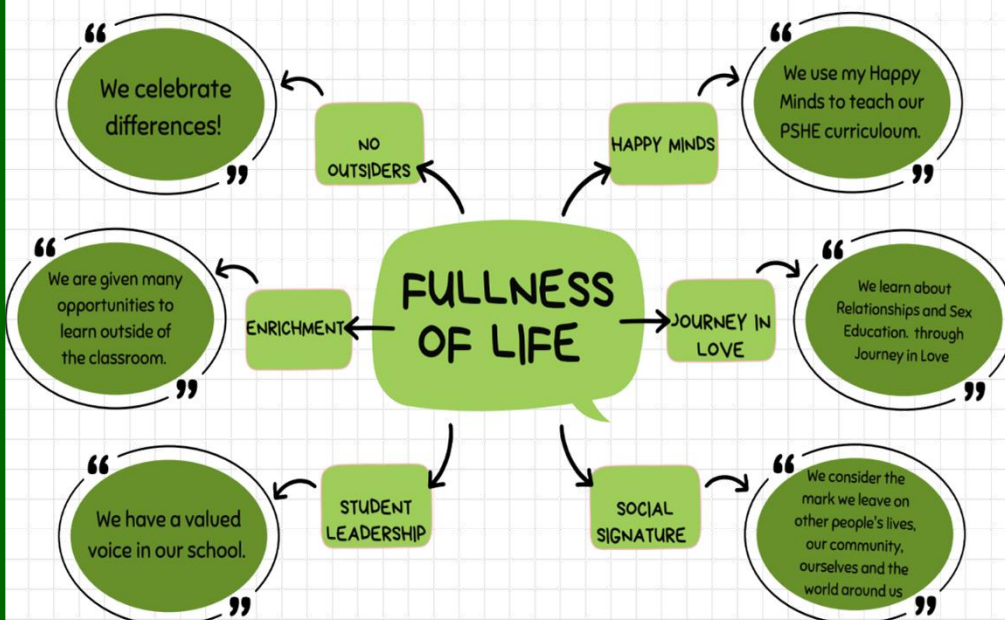
Fullness of Life

St. Gregory's Catholic Primary School seeks to be a Christ-centred community where all are enabled to develop their full potential. Our Personal, Social and Health Education (PSHE) curriculum enables our children to become healthy, independent and responsible members of society. It helps them understand how they are developing personally, socially and emotionally and supports them in navigating the moral, social, and cultural issues that are part of growing up.



At St. Gregory's, PSHE is a core part of our Fullness of Life offer, which brings together a range of programmes and opportunities to nurture the whole child. These range from positive mental health and wellbeing sessions to financial education and safeguarding education sessions.

We aspire for every child to know they belong, and have the knowledge, skills and capacity to achieve so they may thrive.



Visit our Fullness of Life webpage for more information.

www.stgregorysprimary.co.uk

→ Our Curriculum →
[Fullness of Life](#)



RECEPTION PLACES

CURRENTLY AVAILABLE

Do you know a child currently in Reception who would like a place at St. Gregory's?

APPLY FOR RECEPTION

CLASS 2026

Do you know somebody who is looking for a Reception place from September 2026?

ST. GREGORY'S CATHOLIC PRIMARY SCHOOL

TOGETHER, IN JESUS, WE LOVE, LEARN, CREATE AND CELEBRATE!



EVERY DAY IS OPEN DAY

Come along for a guided tour from our headteacher, and see what makes St. Gregory's such a special place to learn and grow.

All visits welcome.

Visits during the school day warmly encouraged.

Tel: 0151-526-5856

email: admin.stgregorys@schools.sefton.gov.uk

www.stgregorysprimary.co.uk

Instagram: @stgregs_primary

APPLY FOR A SCHOOL PLACE

Is your child born on or between
01/09/2021 and 31/08/2022?

If so, your child is due to start
school September 2026!



**You MUST apply for a school place
online before 15 January 2026**

For more information or to make an
application, scan our QR code or go to
www.sefton.gov.uk/startingschool



sefton.gov.uk 0151 934 3590
admissions@sefton.gov.uk

Sefton Council



Supporting families with children who have (or may have) SEND and/or neurodevelopmental needs.

What's on in Sefton Autumn 1 2025

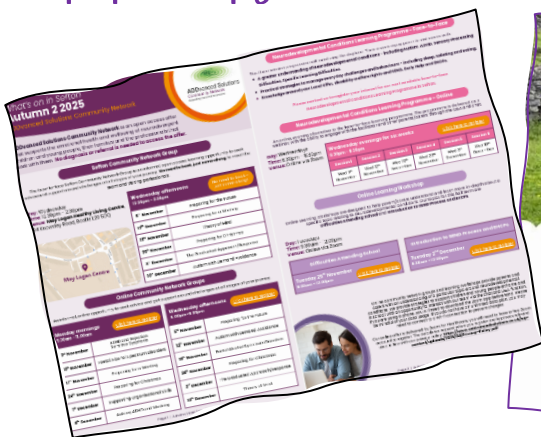
ADDvanced Solutions Community Network



ADDvanced Solutions Community Network is an open access offer that supports the emotional health and wellbeing of neurodivergent children and young people, their families and the professionals that work with them. **No diagnosis or referral is needed to access the offer.**

ADDvanced Solutions Community Network has released their programme of support - this is available to all families and the wider community! Please visit our SEND webpage or drop into the school office to collect a paper copy.

www.stgregorysprimary.co.uk → Key Information → [SEND](#)



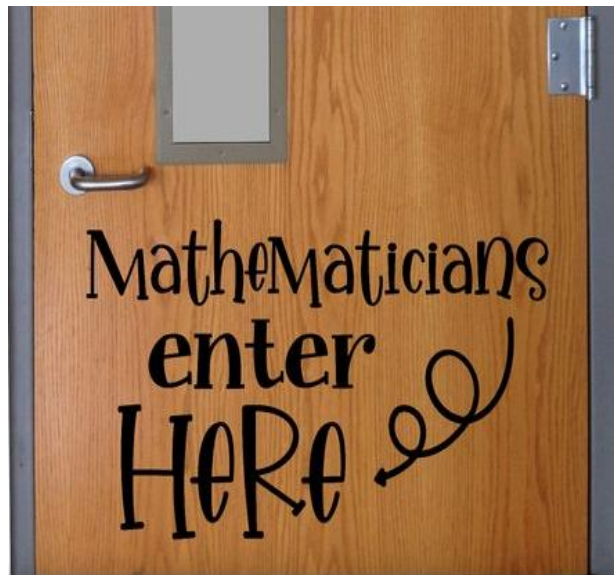
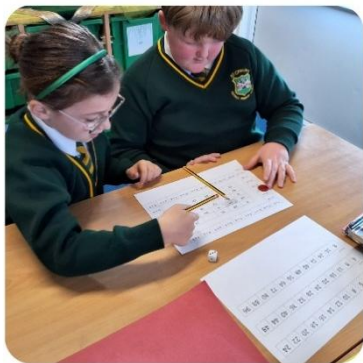
The support offer is high quality and incredibly broad, covering a range of topics in a variety of ways:

- Sefton Community Network Groups (at the May Logan Healthy Living Centre, Bootle) on Wednesday afternoons, 12.30pm-2.30pm
- Online Community Network Groups, on Monday mornings (9.30am-11am) and Wednesday afternoons/early evenings (5pm - 6.30pm)
- Neurodevelopmental Conditions Learning Programme: Face-to-Face
- Neurodevelopmental Conditions Learning Programme: Online (Wednesday evenings, 6.30pm - 8.30pm)
- Online Learning Workshops (various dates)
- Autism Learning Programme for various ages on various dates
- Neurodevelopmental Conditions Awareness Raising Training for Professionals (contact for more info)

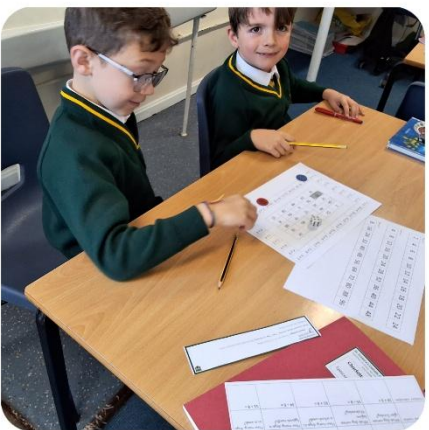
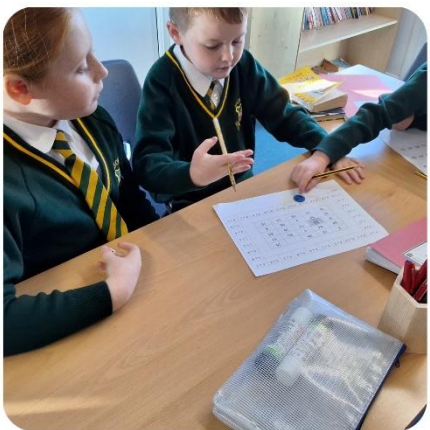
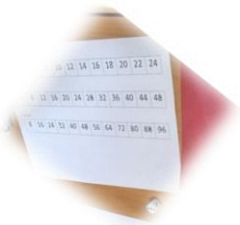


The children in Reception class had a wonderful time carving pumpkins this week. They were full of excitement as they explored the different shapes, sizes, and colours of the pumpkins. The children scooped out the seeds, felt the slimy insides, and helped design funny and spooky faces. They enjoyed talking about their Halloween experiences and sharing their ideas for how their pumpkins should look. The activity was a fantastic opportunity for them to develop their fine motor skills, creativity, and teamwork—ending with big smiles and glowing pumpkins to be proud of!





As you walked by the door of our Year 3 classroom this week, you could hear the budding mathematicians inside, who love exploring numbers in creative ways! The room was buzzing with excitement as the children used number lines, counters, and colourful visuals to solve problems and explain their thinking. Whether they're jumping along a number line to add and subtract, or using diagrams to show their understanding of place value, every child is developing confidence and curiosity in maths. It's a joyful space where mistakes are seen as learning opportunities and every mathematician is encouraged to think deeply, talk about their strategies, and celebrate their progress.



St. Gregory's Catholic
Primary School Presents...

BINGO NIGHT!

THURSDAY, 4th DECEMBER
STARTING at 6:00 PM

St. Gregory's Catholic Primary School

£2.00 per adult
£1.00 per child

Bingo tickets and refreshments
on sale during the event!

Come along for an
evening full of fun,
prizes, and community
spirit - everyone
welcome!



CELEBRATE!



See how our children
Thrive & Shine!
Well done to all our
award winners!





St. Gregory's Catholic Primary School



Together, in Jesus, we Love, Learn, Create and Celebrate!

Autumn Term 2025/2026

Autumn 1

- Mon 1st Sep: INSET Day (Staff only)
- Tues 2nd Sep: Autumn 1 Begins
- Mon 8th Sep: Y5 Swimming Begins
- Thu 11th Sep: Photographer (Individuals)
- Wed 17th Sep: Stay & Pray Class Worship (9am)
- Wed 1st Oct: Reception Reading Meeting (6pm-7pm, for Reception Class families)
- Fri 3rd Oct: Welcome Assembly (Reception Class & New Families)
- Tues 7th Oct-Wed 8th Oct: Parents' Eves
- Mon 6th-Fri 10th Oct: Book Fair
- Thu 23rd Oct: Y1 Croxteth Farm
- Fri 24th Oct: School Closes for Half Term Holiday (usual time)

Autumn 2

- Mon 3rd Oct: INSET Day (Staff only)
- Tues 4th Oct: Autumn 2 Begins
- Fri 7th Nov: Mufti Day (1 of 2)
Early Years/KS1 - chocolates/tinned sweets
KS2- fancy goods/gifts sets
- Thu 13th Nov: Y2 Chester Trip
- Mon 24th Nov: Y4 Swimming Begins
- Thu 27th Nov: Stay & Pray Class Worship (9am)
- Fri 28th Nov: Mufti Day
All classes – Bottle Donations
- Tues 2nd Dec: Y4 First Reconciliation (in school)
- Wed 3rd Dec: Y6 SATs Meeting (Y6 parents)
- Thu 4th Dec: Christmas Bingo
- Fri 5th Dec: Y5/6 Choir at Beechcroft Residential Home (during lunchtime)
- Tues 9th-Wed 10th Dec: EYFS/KS1 Christmas Performances
(EYFS at 9.15am; KS1 at 2pm)
- Thu 11th Dec: Christmas Dinner Day!
Children may wear a Christmas Jumper/Festive Decoration with their uniform.
- Thu 11th Dec: Ecumenical Carol Service (6pm – 7pm, for Choir; all welcome)
- Fri 12th Dec: Curriculum Showcase (8.50am, all welcome)
- Mon 15th Dec: Choir Carol Concert, 4pm
- Tues 16th Dec: Whole-School Pantomime (Atkinson Theatre)
No Christmas jumpers- full school uniform, though children may wear a festive decoration if they wish.
- Tues 16th Dec: Nursery Christmas Party (afternoon)
- Fri 19th Dec: School Closes at 1.30pm for Christmas



St. Gregory's Catholic Primary School



Together, in Jesus, we Love, Learn, Create and Celebrate!

Spring Term 2025/2026

Spring 1

- Mon 5th Jan: Spring 1 Begins
- Tue 13th Jan: Y6 at Southport Eco Centre
- Thu 15th Jan: Y3 at Norton Priory
- Wed 21st Jan: Y4 at Chester Roman Experience
- Tue 27th Jan: Stay & Pray Class Worship (8.50am)
- Fri 6th Feb: Choir at Young Voices (Co-op Live Arena, Manchester)
- Mon 9th Feb: Y3 Swimming Begins
- Wed 11th Feb-Fri 13th Feb: Y3 Residential (CHET, Crosby)
- Fri 13th Feb: School Closes for Half-Term Holiday (usual time)

Spring 2

- Mon 23rd Feb: Spring 2 Begins
- Tues 24th Feb: Y2 Trip to Chester Zoo
- Wed 25th Feb-Tues 3rd Mar: Book Fair
- Wed 25th Feb-Thur 26th Feb: Parents' Eves
- Wed 25th-Tues 3rd Mar: Book Fair
- Thu 26th Feb: Y5 at Liverpool Old Docks Museum & Bus Tour
- Wed 4th Mar-Fri 6th Mar: Y5 Residential (York City Centre)
- Thur 5th Mar: World Book Day
- Wed 11th Mar: Science Fair (3.30pm in the school hall)
- Thu 12th Mar: Lenten Reconciliation Schools' Service at St. Gregory's Church
- Fri 13th Mar: Curriculum Showcase (8.50am, all welcome)
- Tue 17th Mar: Y1 at Storybarn, Calderstones Park
- Wed 18th Mar: Stay & Pray Class Worship (8.50am)
- Mon 23rd-Tue 26th Mar: Good Shepherd Fundraising Week (KS2 Enterprise; all children able to join the fun & donate)
- Fri 27th Mar: Talent Show in afternoon
- Fri 27th Mar: School Closes for Easter Holidays (usual time)



St. Gregory's Catholic Primary School



Together, in Jesus, we Love, Learn, Create and Celebrate!

Summer Term 2025/2026

Summer 1

- Mon 13th Apr: Summer 1 Begins
- Thu 30th Apr: Reception at Martin Mere
- Thu 7th May: Stay & Pray Class Worship (8.50am)
- Mon 11th May: Y6 Swimming Begins
- Mon 11th May-Thur 14th May: Y6 SATs
- Thur 21st May: Y3 at Catalyst Centre
- Thur 21st May: School Closes for Half-Term Holiday (usual time)
- Fri 22nd May: INSET Day (staff only)

Summer 2

- Mon 1st Jun: INSET Day (Staff only)
- Tues 2nd Jun: INSET Day (Staff only)
- Wed 3rd Jun: Summer 2 Begins
- Tues 9th Jun: Y6 at Western Approaches
- Wed 10th Jun-Fri 12th Jun: Y4 Residential (Malham, Yorkshire)
- Fri 12th Jun – Y5 at Quarrybank Mill (Victorian Service Costumes)
- Tue 16th Jun: Stay & Pray Class Worship (8.50am)
- Wed 24th Jun: Y1/2 Liverpool Philharmonic Trip (Return at approx. 3.30pm)
- Fri 26th June – Sports Day (KS1 9am; KS2 1pm)
- Wed 1st Jul-Fri 3rd Jul: Y6 Residential (Robinwood, Wrexham)
- Fri 10th Jul: Curriculum Showcase & Art Exhibition (8.50am)
- Fri 10th Jul: End-of-Year Reports shared
- Tue 14th Jul: KS2 Performance (1.30pm for Y3 & Y5 families)
- Wed 15th Jul: KS2 Performance (10.15am for Grandparents) (1.30pm for Y4 & Y6 families)
- Wed 15th Jul: Optional Parents' Eve
- Thu 16th Jul: Y6 Leavers' Mass, 10am, in school
- Thu 16th Jul: Summer Disco (EYFS/KS1: 4.30pm – 5.45pm) (KS2: 6pm – 7.15pm)
- Fri 17th Jul: School Closes at 1.30pm for Summer Holidays