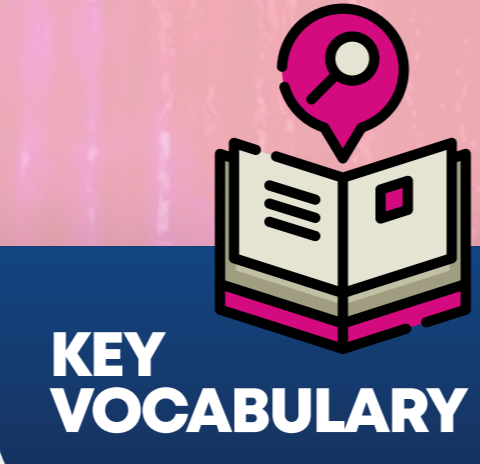
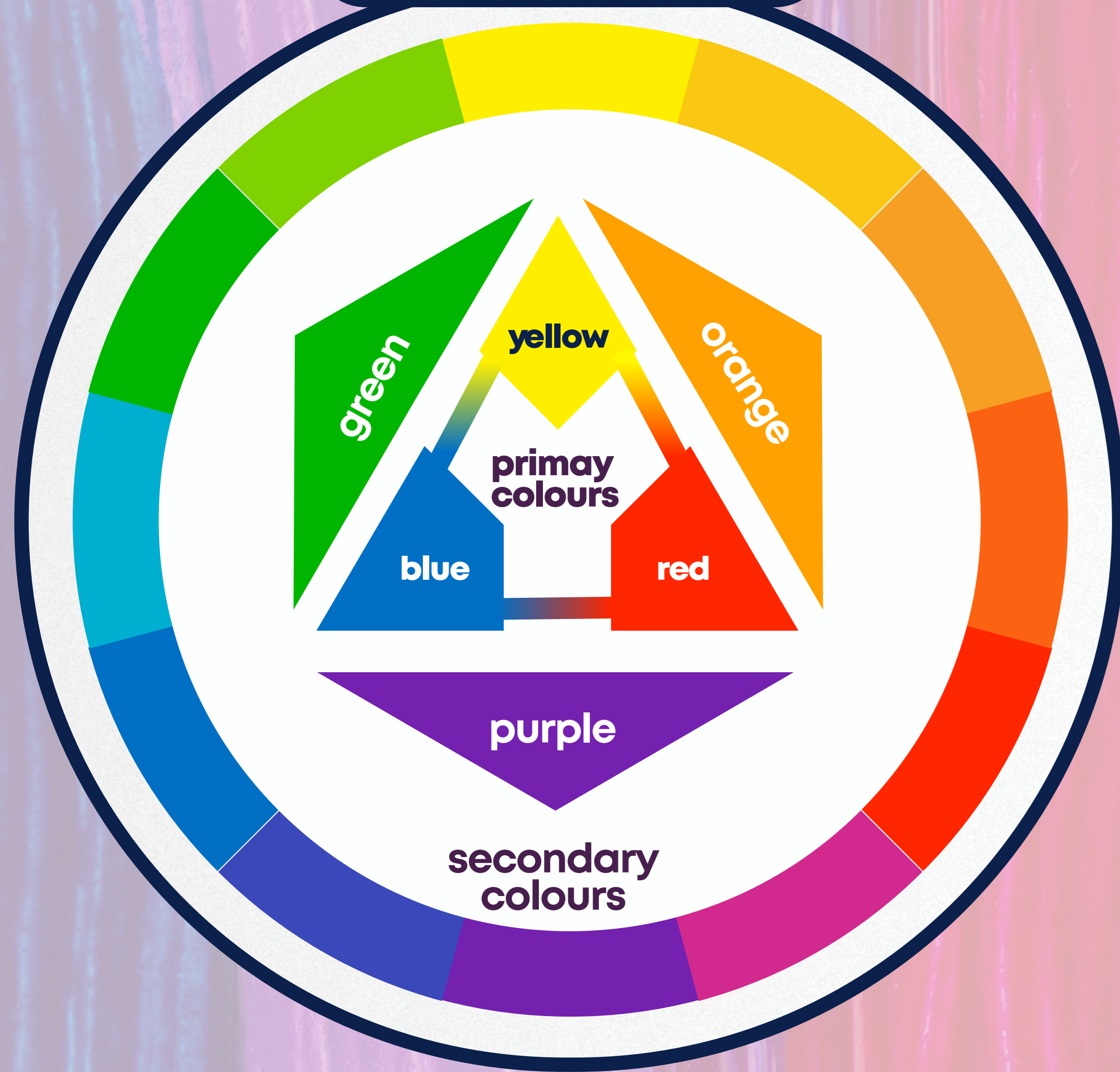




colour wheel



primary colours

yellow, red and blue: these colours cannot be mixed from other colours

secondary colours

green, orange and purple: these colours are mixed by combining two primary colours

warm/cool colours

yellow, orange and red are warm colours: these colours create a warm mood
blue, green and grey are cool colours. These colours create a cold mood.

tint

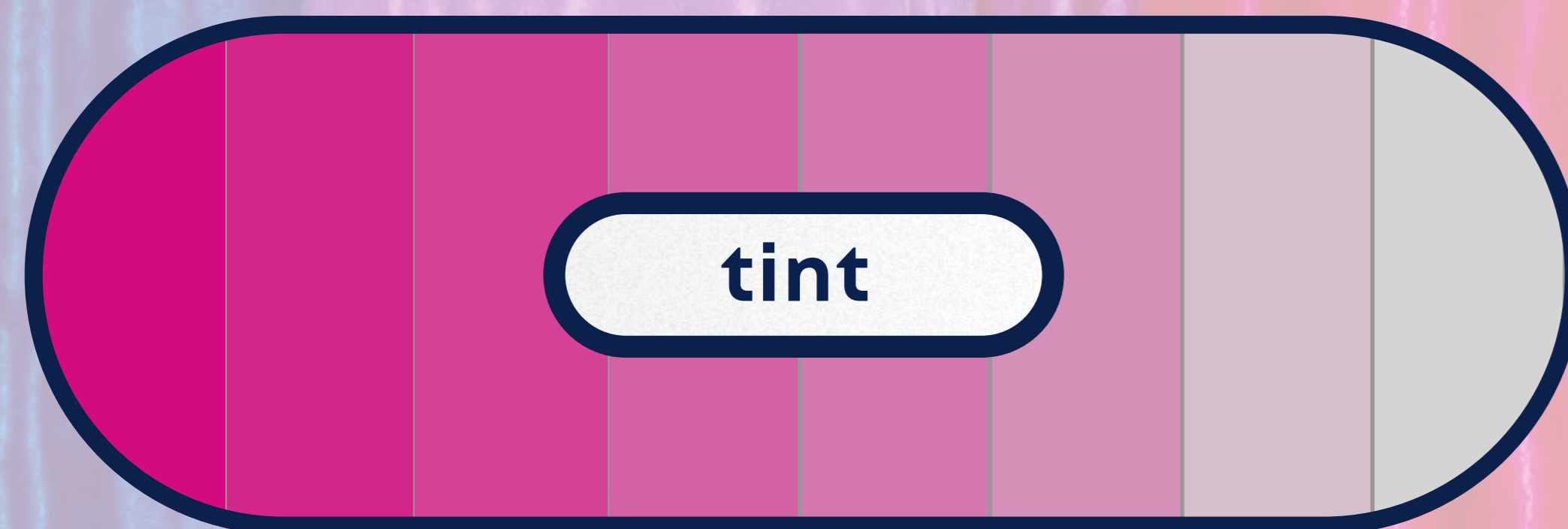
when a **colour is made lighter by adding white**, e.g. a tint of blue (light blue)

shade

when a **colour is made darker by adding black**, e.g. a shade of blue (dark blue)

brushstroke

the marks a painter makes with their brush



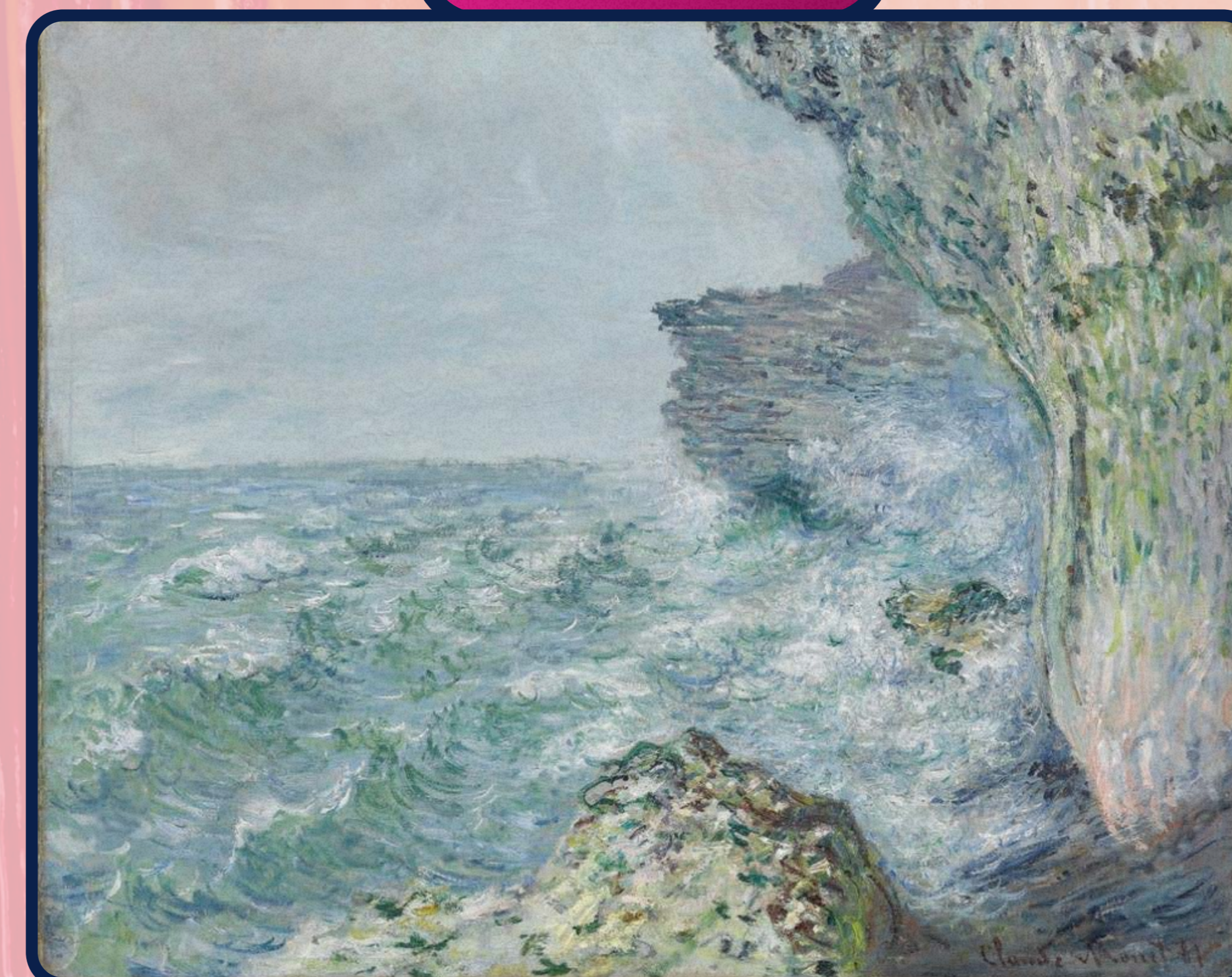
Hockney



Tate UK

A Bigger Splash (1967)

Monet



The Sea at Fecamp (1881)

Van Gogh



Sunflowers (1888)